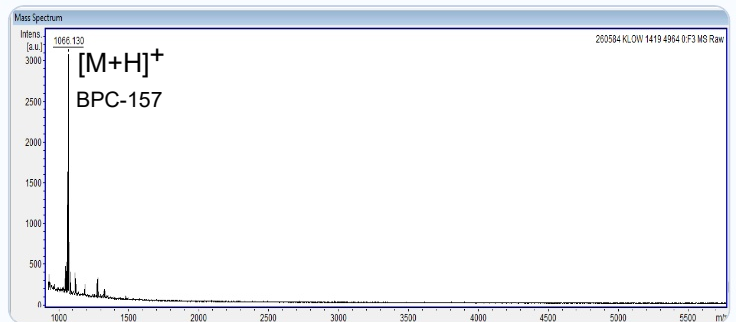
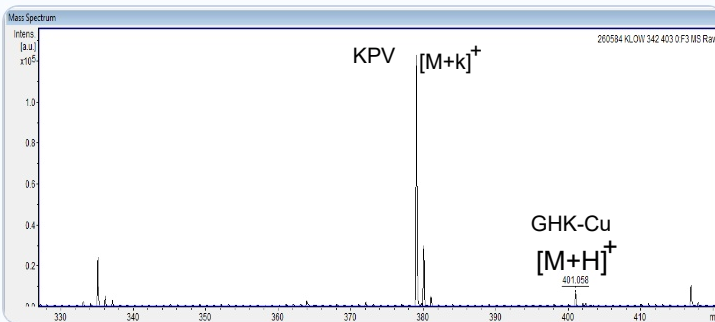
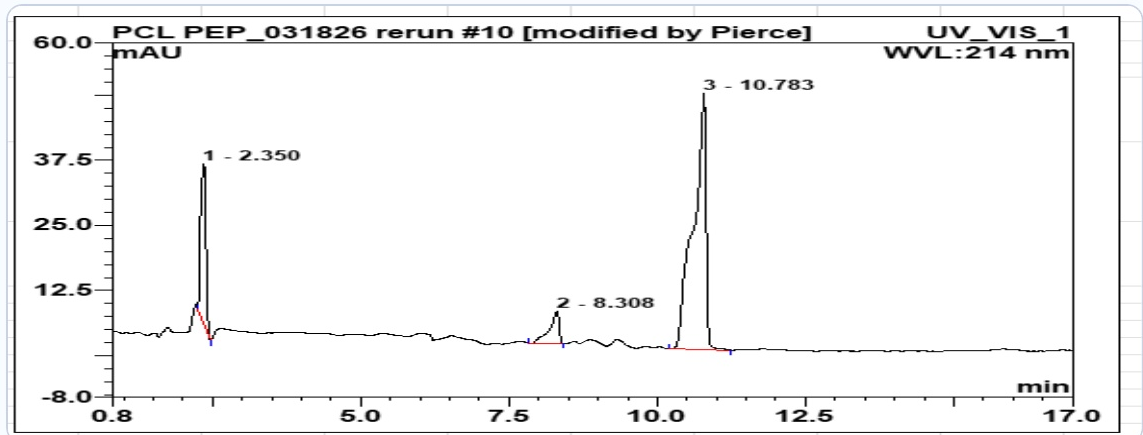


Sample Received: **February 28, 2026**COA Issued: **March 27, 2026****PRODUCT INFORMATION**Vendor:
UpgradeSample Name:
KLOWSample Type:
CapsuleLot Number:
70-202602-75MW:
342.1, 403.1, 1419, 4964 g/mol**ANALYTICAL METHODS****Identity:** Confirmed via MALDI-MS**Purity:** RP-HPLC (214 nm)**Content:** HPLC quantitation**TEST RESULTS**

Specification	Result	Method	Status
Identity: KLOW	KPV, GHK-Cu, BPC-157	MALDI-MS	✓ Conforms
Content	78.65 mg	HPLC Quantitation	✓ Conforms
Purity	99.7%	RP-HPLC (214 nm)	✓ Conforms

ANALYTICAL DATAHPLC Chromatogram (Retention Time: 2.058 min)**Certification:** This COA confirms that the tested material meets or exceeds Bioviridian's analytical quality specifications for peptide research use.Visit: <https://bioviridians.com/coa-search.html>*Shane Straight***Shane Straight, M.S.**

Principal Chemist, Bioviridian Inc.

