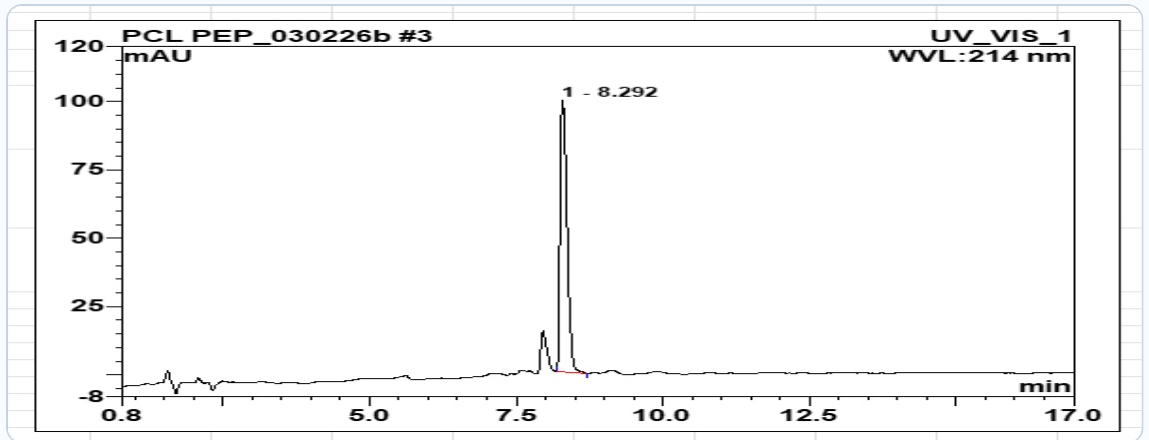
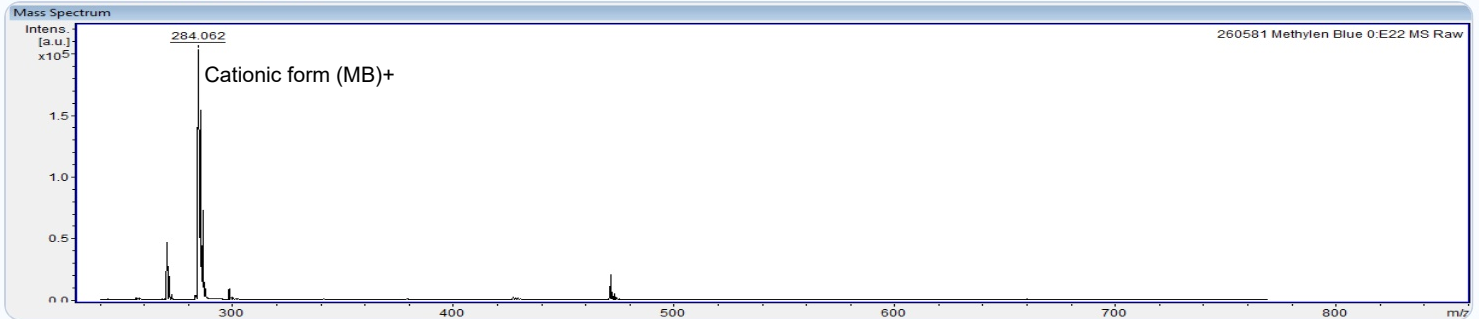


Sample Received: **February 27, 2026**COA Issued: **April 1, 2026****PRODUCT INFORMATION**Vendor:  
**Upgrade**Sample Name:  
**Methylene Blue 30ml**Sample Type:  
**Blue liquid**Lot Number:  
**70-202602-79**MW:  
**319.9 g/mol****ANALYTICAL METHODS****Identity:** Confirmed via MALDI-MS**Purity:** RP-HPLC (214 nm)**Content:** HPLC quantitation**TEST RESULTS**

| Specification            | Result         | Method            | Status     |
|--------------------------|----------------|-------------------|------------|
| Identity: Methylene Blue | Methylene Blue | MALDI-MS          | ✓ Conforms |
| Content                  | 27.98 mg       | HPLC Quantitation | ✓ Conforms |
| Overall Purity           | 99.8%          | RP-HPLC (214 nm)  | ✓ Conforms |

**ANALYTICAL DATA**HPLC Chromatogram (Retention Time: 8.292 min)**Mass Spectrum (MALDI-MS)****Certification:** This COA confirms that the tested material meets or exceeds Bioviridian's analytical quality specifications for peptide research use.Visit: <https://bioviridians.com/coa-search.html>*Shane Straight***Shane Straight, M.S.**  
Principal Chemist, Bioviridian Inc.Contact: [info@bioviridians.com](mailto:info@bioviridians.com)